








## What happens next?

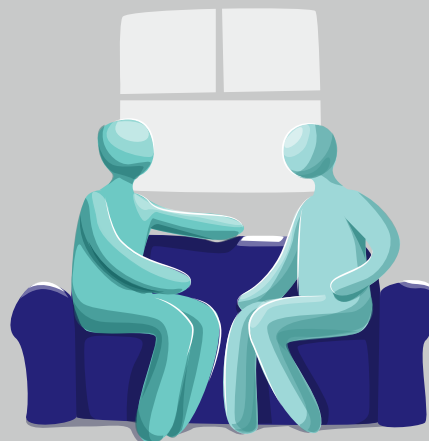
You will find out if there are 'Reasonable Grounds' that you could possibly be a victim.

If it is decided that there are 'Reasonable Grounds', you can get protection and support from the UK government. You will get support for at least **30** days. This support will help you recover and decide what you want to do next.

The support can include:

-  accommodation in a safe place
-  medical care
-  counselling
-  financial support
-  legal advice
-  an interpreter or translator to help you with English
-  someone who can support you through this time

We make sure that you get the right support, which can be all or just some of the support listed above.



You can change your mind about support and ask for it later even if you decide you don't need it now. Please make sure you keep this leaflet.

**If you need support,  
please call:**



The Salvation Army:  
0800 808 3733  
(24 hours)



Email  
[mstreferrals@salvationarmy.org.uk](mailto:mstreferrals@salvationarmy.org.uk)



HM Government

Welcome to the

# National Referral Mechanism

**The UK government uses the National Referral Mechanism to recognise people who might be victims of modern slavery.**

### **What is modern slavery?**

Modern slavery includes two very serious crimes:

**Human trafficking** is when a person is brought to a different country or area to do things they don't want to do, such as being forced to work.

**Slavery, servitude or forced labour** is when a person is forced to work or provide a service they don't want to do.

They might be threatened, frightened or hurt by other people.

### **What is the National Referral Mechanism (NRM)?**

The NRM is the process the government uses to identify people who might be victims of modern slavery.

It is also used to refer victims to organisations who can **help to provide the protection and support you need to recover.**



### **How does the NRM work?**

When you are referred into the NRM, a trained caseworker will look at the events you have experienced. They will decide if there is enough evidence to suggest that you might be a victim. They will make two assessments to decide this.

The first assessment is a 'Reasonable Grounds' decision.

This will take up to 5 working days. If you need somewhere to stay during the 5 working days, the Salvation Army can help you. The phone number and email address are on the back of this leaflet.

If it is found that you might be a victim, a caseworker will gather more information to make a second decision. This is called a 'Conclusive Grounds' decision. This will assess if there is enough evidence that you are a victim.

Throughout this decision-making process you can have help and support.

It's important to know that these decisions have nothing to do with your immigration status.

